

PRIVÉ<sup>®</sup>  
AN ISLAND BEYOND EXTRAORDINARY

FLOOR PLANS

## RESIDENCE A

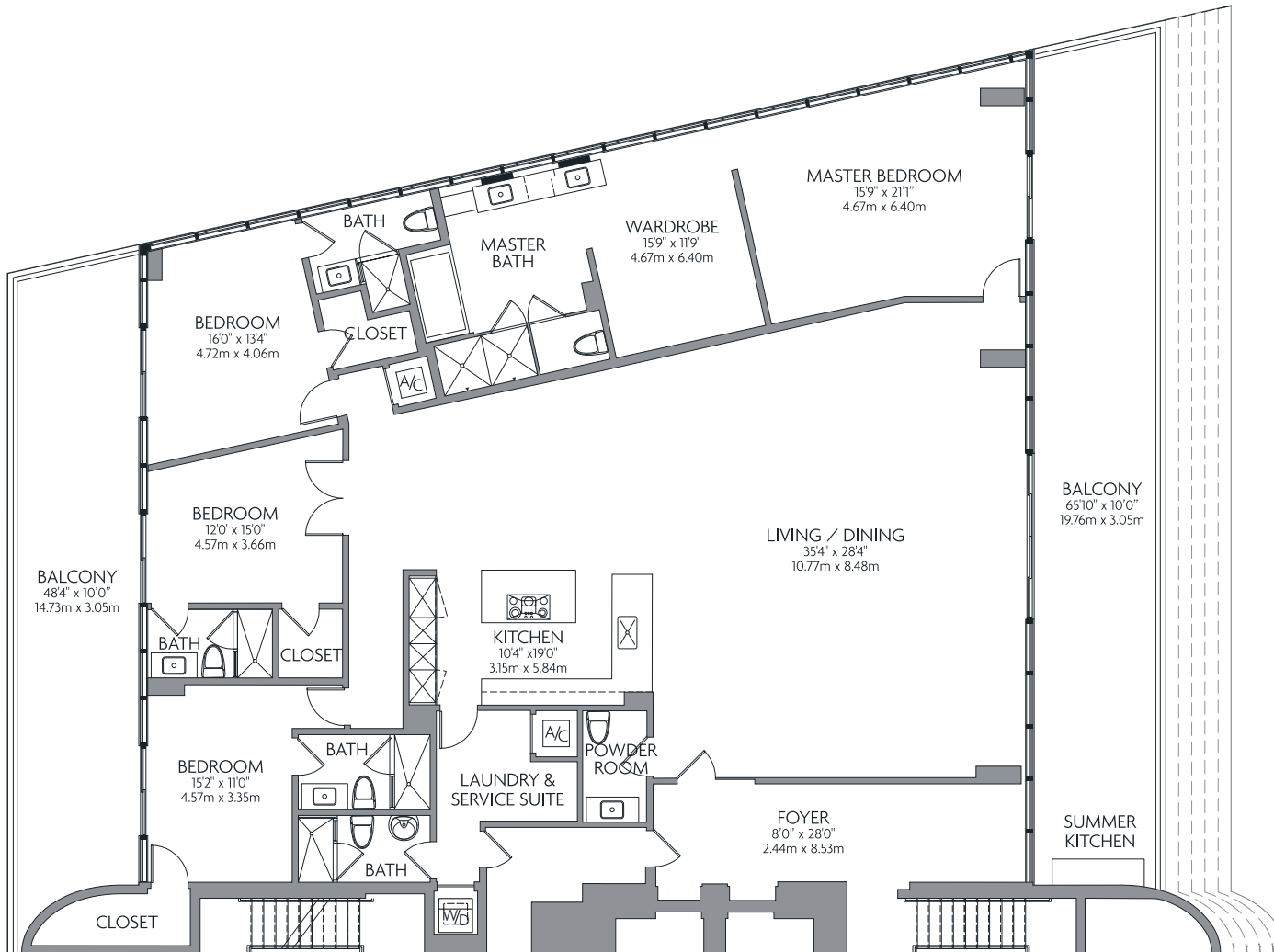
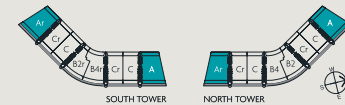
4 BEDROOMS / 5.5 BATHROOMS

INTERIOR	3,927 SF	364.83 M <sup>2</sup>
TERRACE	1,137 SF	105.63 M <sup>2</sup>
TOTAL *	5,064 SF	470.46 M <sup>2</sup>

\*Floor Plan shown on 9th Floor, add or subtract 64 SF / 5.9 M<sup>2</sup> per level

Privé offers 160 graciously appointed residences in two dramatically angled, 16-story buildings. Featuring flow-through layouts with soaring, ten-foot ceilings, each Privé residence offers dramatic views of both the Atlantic Ocean and the Intracoastal Waterway through expansive floor-to-ceiling windows.

Private elevator foyers lead to spacious, well-proportioned spaces ranging from 2,585 to over 9,000 square feet. Exceptional fixtures and finishes include European kitchens and baths, plus elaborate summer kitchens for outdoor entertaining on deep, private terraces.



BAY VIEW

INTRACOASTAL & OCEAN VIEW

Stated measurements and dimensions of residences are measured to the exterior boundaries of the exterior walls and the centerline of interior demising walls and in fact vary from the dimensions that would be determined by using the description and definition of the "Unit" set forth in the Declaration (which generally only includes the interior airspace between the perimeter walls and excludes all interior structural components and other common elements). This method of measurement used herein is generally used in sales materials and is provided to allow a prospective buyer to compare the Units with units in other projects that utilize the same method. Balconies are not part of the Unit. Measurements of rooms set forth on floorplans are generally taken at the farthest points of each given room (as if the room were a perfect rectangle), without regard for any cutouts or variations. Accordingly, the interior air space dimensions of the actual room will typically be smaller than the product obtained by multiplying the stated length and width. All measurements and dimensions are estimates based on preliminary plans which will vary with actual construction. All floorplans, specifications and other development plans are proposed and conceptual only, and are subject to change and will not necessarily accurately reflect the final plans and specification.

## RESIDENCE B2

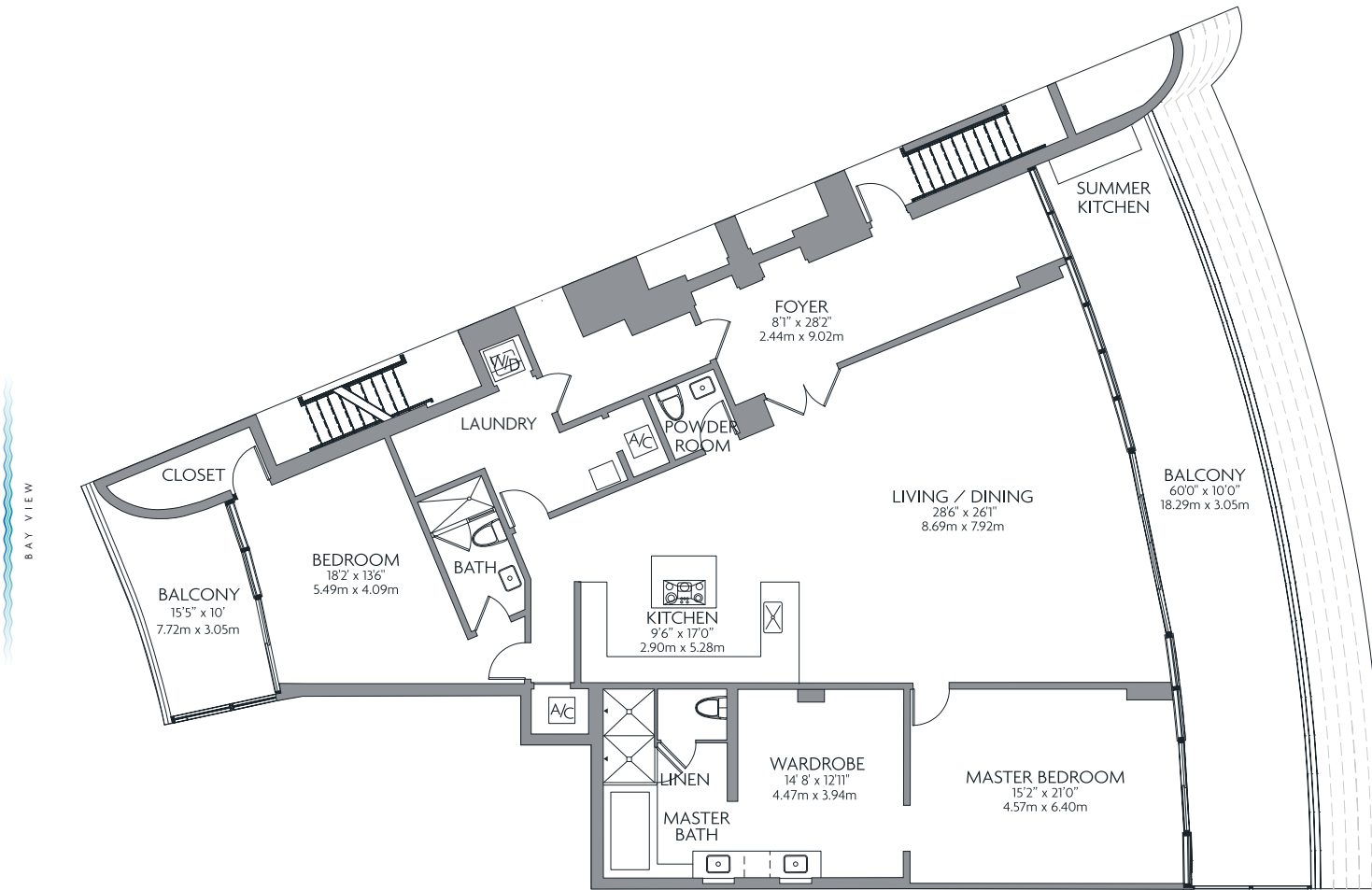
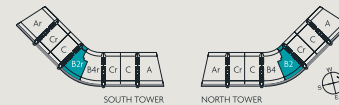
2 BEDROOMS / 2.5 BATHROOMS

INTERIOR	2,817 SF	261.71 M <sup>2</sup>
TERRACE	762 SF	70.79 M <sup>2</sup>
TOTAL *	3,579 SF	332.5 M <sup>2</sup>

\*Floor Plan shown on 9th Floor, subtract 59 SF / 5.5 M<sup>2</sup> per level

Privé offers 160 graciously appointed residences in two dramatically angled, 16-story buildings. Featuring flow-through layouts with soaring, ten-foot ceilings, each Privé residence offers dramatic views of both the Atlantic Ocean and the Intracoastal Waterway through expansive floor-to-ceiling windows.

Private elevator foyers lead to spacious, well-proportioned spaces ranging from 2,585 to over 9,000 square feet. Exceptional fixtures and finishes include European kitchens and baths, plus elaborate summer kitchens for outdoor entertaining on deep, private terraces.



Stated measurements and dimensions of residences are measured to the exterior boundaries of the exterior walls and the centerline of interior demising walls and in fact vary from the dimensions that would be determined by using the description and definition of the "Unit" set forth in the Declaration (which generally only includes the interior airspace between the perimeter walls and excludes all interior structural components and other common elements). This method of measurement used herein is generally used in sales materials and is provided to allow a prospective buyer to compare the Units with units in other projects that utilize the same method. Balconies are not part of the Unit. Measurements of rooms set forth on floorplans are generally taken at the farthest points of each given room (as if the room were a perfect rectangle), without regard for any cutouts or variations. Accordingly, the interior air space dimensions of the actual room will typically be smaller than the product obtained by multiplying the stated length and width. All measurements and dimensions are estimates based on preliminary plans which will vary with actual construction. All floorplans, specifications and other development plans are proposed and conceptual only, and are subject to change and will not necessarily accurately reflect the final plans and specification.

## RESIDENCE B3

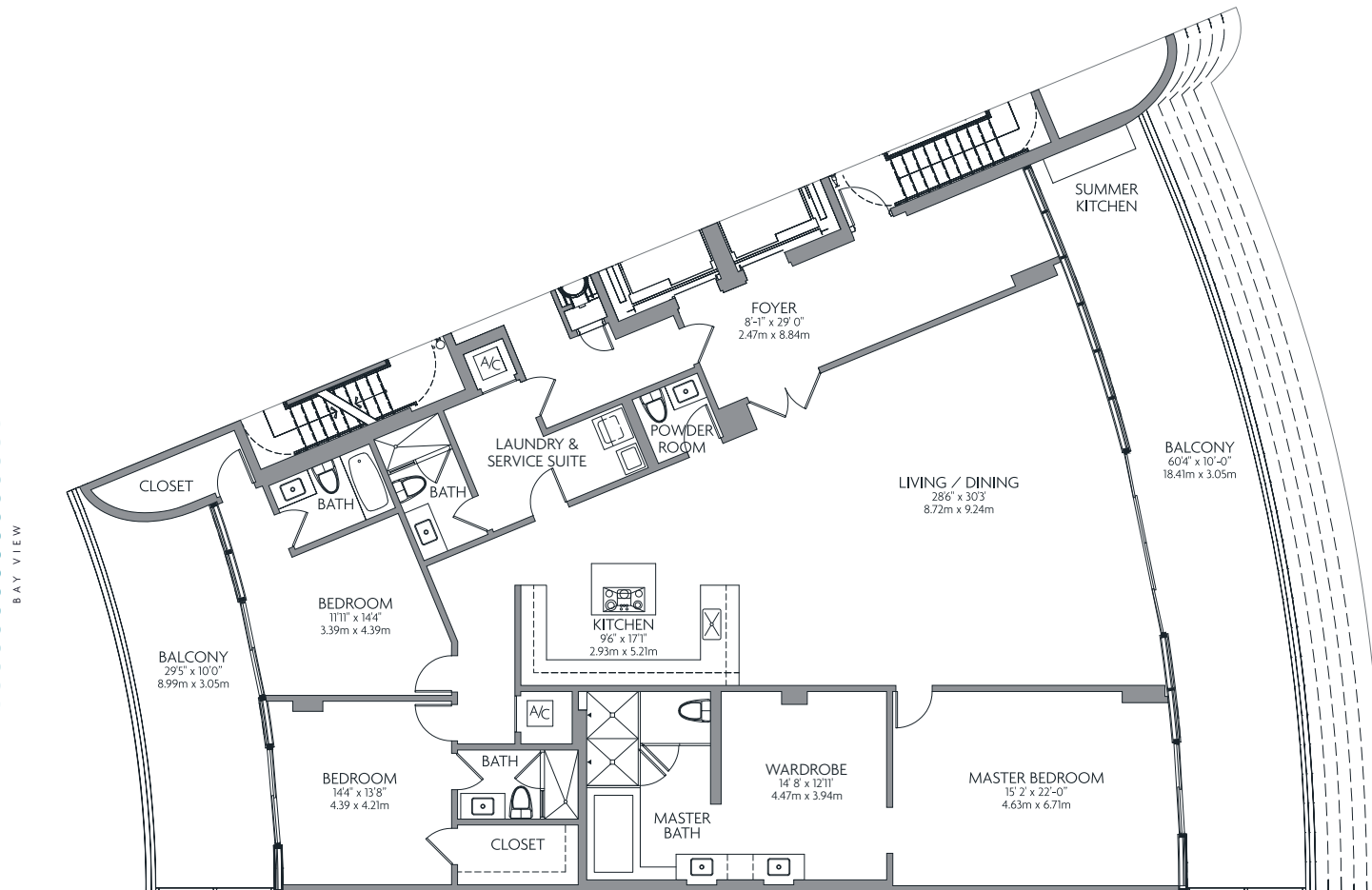
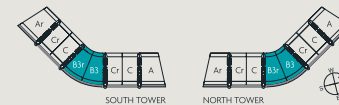
3 BEDROOMS / 4.5 BATHROOMS

INTERIOR	3,198 SF	297.10 M <sup>2</sup>
TERRACE	913 SF	84.82 M <sup>2</sup>
<b>TOTAL</b>	<b>4,111 SF</b>	<b>381.92 M<sup>2</sup></b>

\* Floor Plan shown on 10th Floor, add or subtract 59 SF / 5.5 M<sup>2</sup> per level

Privé offers 160 graciously appointed residences in two dramatically angled, 16-story buildings. Featuring flow-through layouts with soaring, ten-foot ceilings, each Privé residence offers dramatic views of both the Atlantic Ocean and the Intracoastal Waterway through expansive floor-to-ceiling windows.

Private elevator foyers lead to spacious, well-proportioned spaces ranging from 2,585 to over 9,000 square feet. Exceptional fixtures and finishes include European kitchens and baths, plus elaborate summer kitchens for outdoor entertaining on deep, private terraces.



BAY VIEW

INTRACOASTAL & OCEAN VIEW

Stated measurements and dimensions of residences are measured to the exterior boundaries of the exterior walls and the centerline of interior demising walls and in fact vary from the dimensions that would be determined by using the description and definition of the "Unit" set forth in the Declaration (which generally only includes the interior airspace between the perimeter walls and excludes all interior structural components and other common elements). This method of measurement used herein is generally used in sales materials and is provided to allow a prospective buyer to compare the Units with units in other projects that utilize the same method. Balconies are not part of the Unit. Measurements of rooms set forth on floorplans are generally taken at the farthest points of each given room (as if the room were a perfect rectangle), without regard for any cutouts or variations. Accordingly, the interior air space dimensions of the actual room will typically be smaller than the product obtained by multiplying the stated length and width. All measurements and dimensions are estimates based on preliminary plans which will vary with actual construction. All floorplans, specifications and other development plans are proposed and conceptual only, and are subject to change and will not necessarily accurately reflect the final plans and specification.

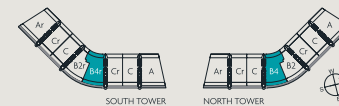
**RESIDENCE B4**  
4 BEDROOMS / 5.5 BATHROOMS

INTERIOR	3,461 SF	321.54 M <sup>2</sup>
TERRACE	1,056 SF	98.11 M <sup>2</sup>
TOTAL *	4,517 SF	419.64 M <sup>2</sup>

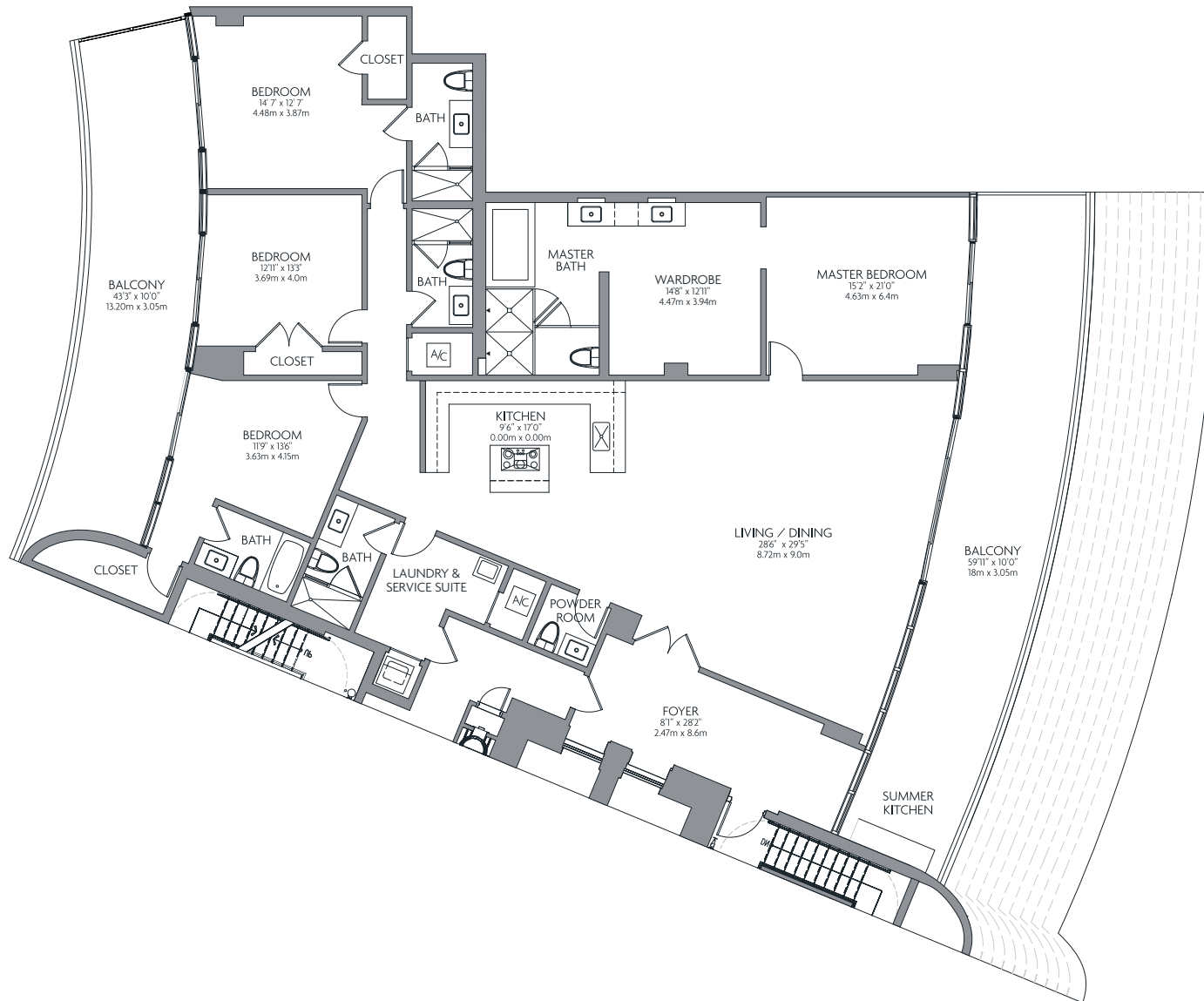
\*Floor Plan shown on 9th Floor, subtract 59 SF / 5.5 M<sup>2</sup> per level

Privé offers 160 graciously appointed residences in two dramatically angled, 16-story buildings. Featuring flow-through layouts with soaring, ten-foot ceilings, each Privé residence offers dramatic views of both the Atlantic Ocean and the Intracoastal Waterway through expansive floor-to-ceiling windows.

Private elevator foyers lead to spacious, well-proportioned spaces ranging from 2,585 to over 9,000 square feet. Exceptional fixtures and finishes include European kitchens and baths, plus elaborate summer kitchens for outdoor entertaining on deep, private terraces.



Stated measurements and dimensions of residences are measured to the exterior boundaries of the exterior walls and the centerline of interior demising walls and in fact vary from the dimensions that would be determined by using the description and definition of the "Unit" set forth in the Declaration (which generally only includes the interior airspace between the perimeter walls and excludes all interior structural components and other common elements). This method of measurement used herein is generally used in sales materials and is provided to allow a prospective buyer to compare the Units with units in other projects that utilize the same method. Balconies are not part of the Unit. Measurements of rooms set forth on floorplans are generally taken at the farthest points of each given room (as if the room were a perfect rectangle), without regard for any cutouts or variations. Accordingly, the interior air space dimensions of the actual room will typically be smaller than the product obtained by multiplying the stated length and width. All measurements and dimensions are estimates based on preliminary plans which will vary with actual construction. All floorplans, specifications and other development plans are proposed and conceptual only, and are subject to change and will not necessarily accurately reflect the final plans and specification.



BAY VIEW

INTRACOASTAL & OCEAN VIEW

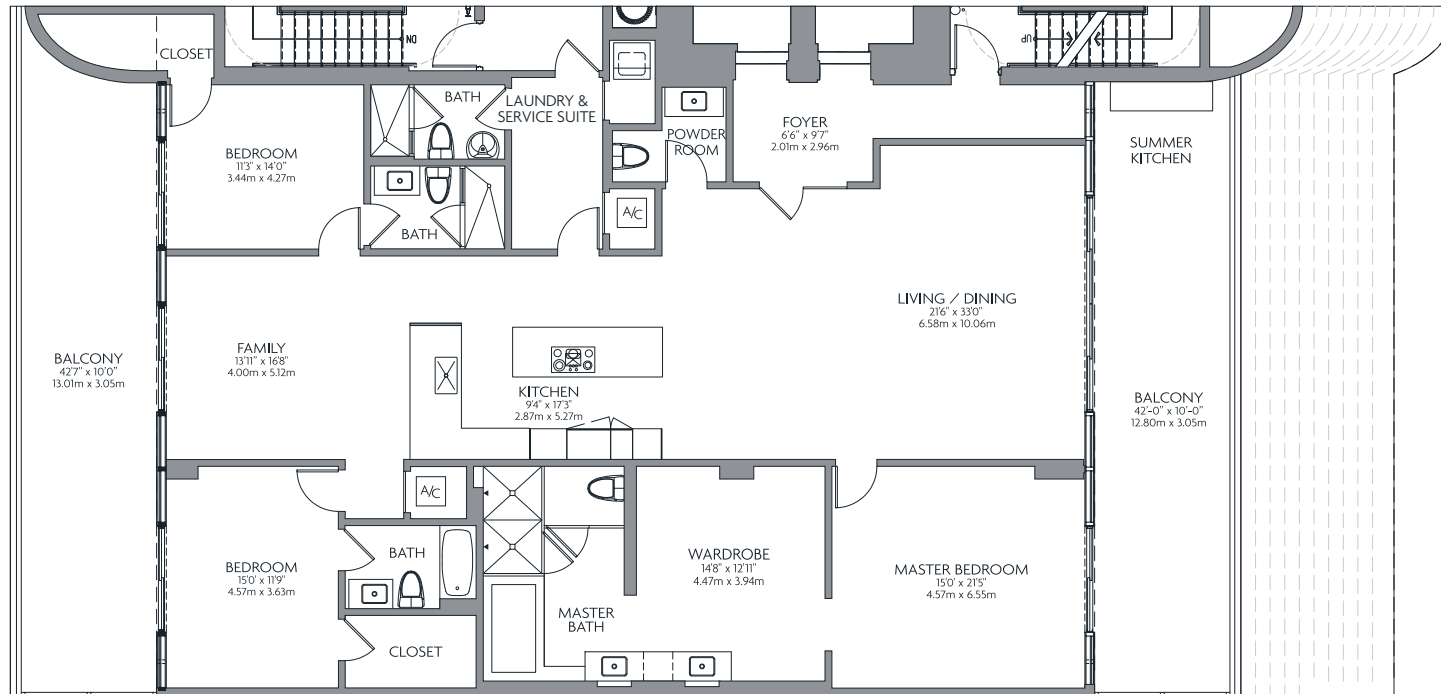
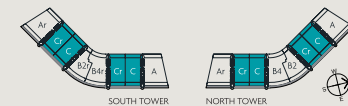
**RESIDENCE C**  
3 BEDROOMS / 4.5 BATHROOMS

INTERIOR	2,979 SF	276.76 M <sup>2</sup>
TERRACE	854 SF	79.34 M <sup>2</sup>
TOTAL *	3,833 SF	356.10 M <sup>2</sup>

\*Floor Plan shown on 9th Floor, add or subtract 43 SF / 4 M<sup>2</sup> per level

Privé offers 160 graciously appointed residences in two dramatically angled, 16-story buildings. Featuring flow-through layouts with soaring, ten-foot ceilings, each Privé residence offers dramatic views of both the Atlantic Ocean and the Intracoastal Waterway through expansive floor-to-ceiling windows.

Private elevator foyers lead to spacious, well-proportioned spaces ranging from 2,585 to over 9,000 square feet. Exceptional fixtures and finishes include European kitchens and baths, plus elaborate summer kitchens for outdoor entertaining on deep, private terraces.



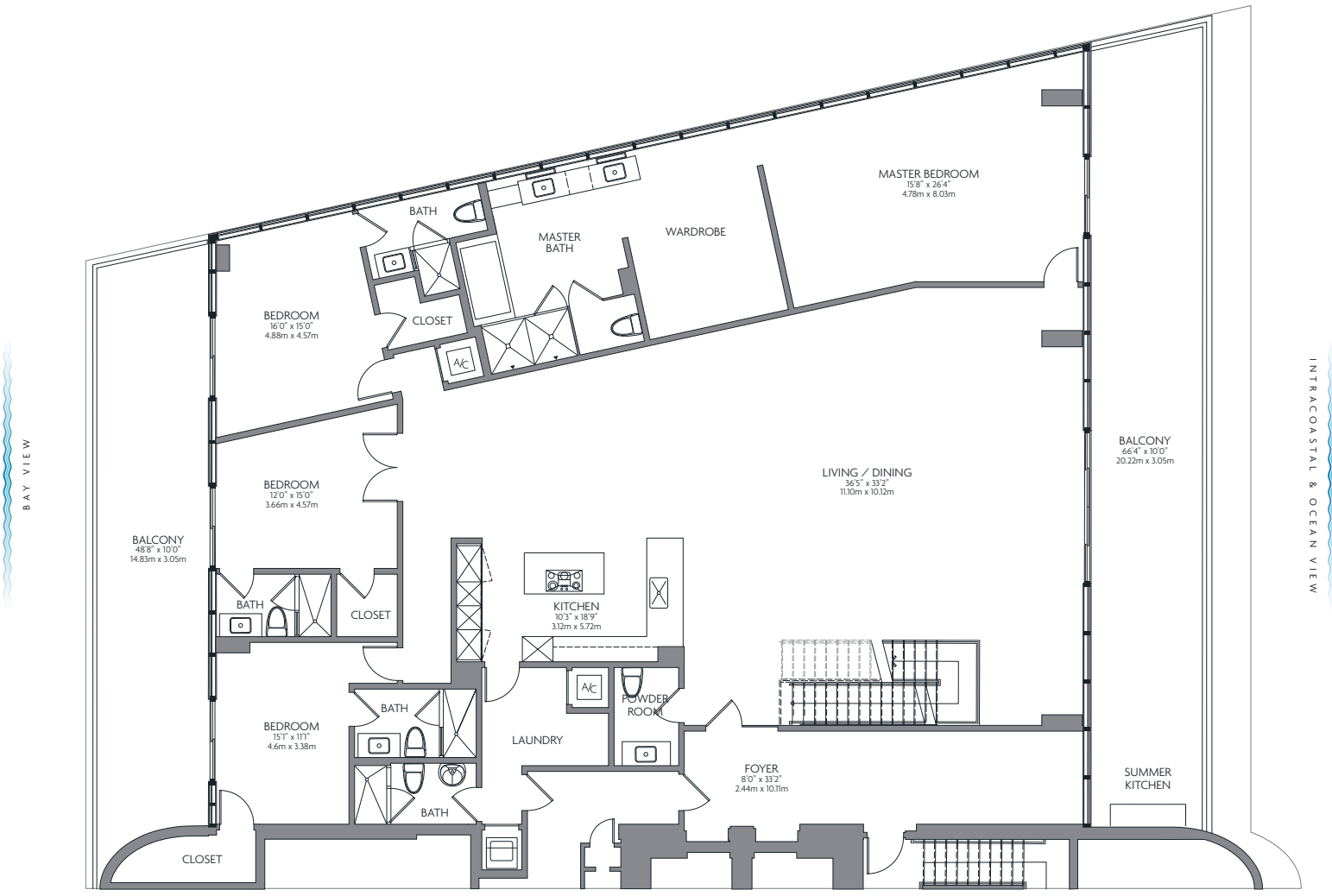
Stated measurements and dimensions of residences are measured to the exterior boundaries of the exterior walls and the centerline of interior demising walls and in fact vary from the dimensions that would be determined by using the description and definition of the "Unit" set forth in the Declaration (which generally only includes the interior airspace between the perimeter walls and excludes all interior structural components and other common elements). This method of measurement used herein is generally used in sales materials and is provided to allow a prospective buyer to compare the Units with units in other projects that utilize the same method. Balconies are not part of the Unit. Measurements of rooms set forth on floorplans are generally taken at the farthest points of each given room (as if the room were a perfect rectangle), without regard for any cutouts or variations. Accordingly, the interior air space dimensions of the actual room will typically be smaller than the product obtained by multiplying the stated length and width. All measurements and dimensions are estimates based on preliminary plans which will vary with actual construction. All floorplans, specifications and other development plans are proposed and conceptual only, and are subject to change and will not necessarily accurately reflect the final plans and specification.

**PENTHOUSE A**  
6 BEDROOMS / 7.5 BATHROOMS

INTERIOR	6,200 SF	576.00 M <sup>2</sup>
TERRACE	4,622 SF	429.38 M <sup>2</sup>
<b>TOTAL *</b>	<b>10,822 SF</b>	<b>1,005.38 M<sup>2</sup></b>

Privé offers 160 graciously appointed residences in two dramatically angled, 16-story buildings. Featuring flow-through layouts with soaring, ten-foot ceilings, each Privé residence offers dramatic views of both the Atlantic Ocean and the Intracoastal Waterway through expansive floor-to-ceiling windows.

Private elevator foyers lead to spacious, well-proportioned spaces ranging from 2,585 to over 9,000 square feet. Exceptional fixtures and finishes include European kitchens and baths, plus elaborate summer kitchens for outdoor entertaining on deep, private terraces.



**LOWER FLOOR**

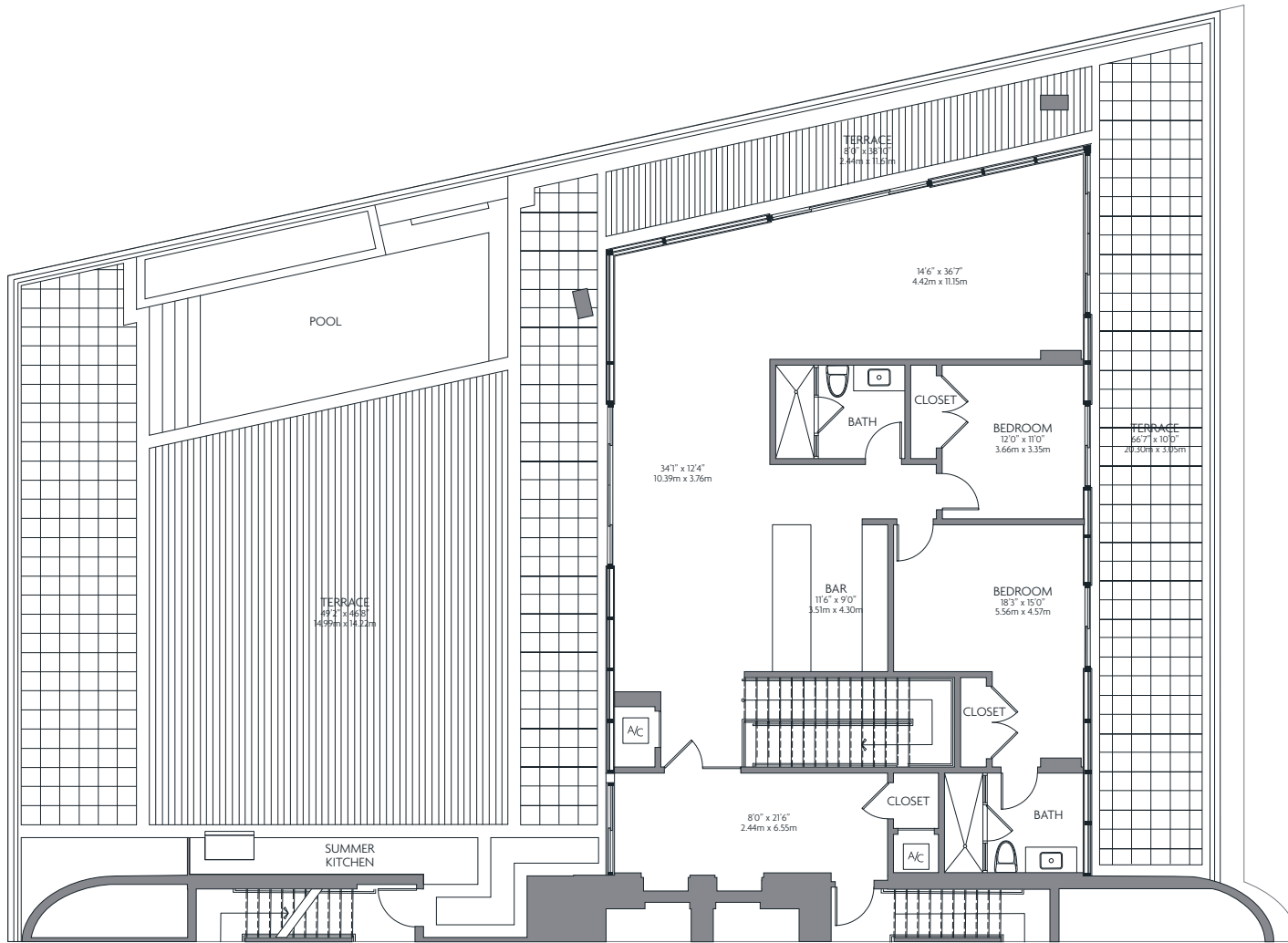
Stated measurements and dimensions of residences are measured to the exterior boundaries of the exterior walls and the centerline of interior demising walls and in fact vary from the dimensions that would be determined by using the description and definition of the "Unit" set forth in the Declaration (which generally only includes the interior airspace between the perimeter walls and excludes all interior structural components and other common elements). This method of measurement used herein is generally used in sales materials and is provided to allow a prospective buyer to compare the Units with units in other projects that utilize the same method. Balconies are not part of the Unit. Measurements of rooms set forth on floorplans are generally taken at the farthest points of each given room (as if the room were a perfect rectangle), without regard for any cutouts or variations. Accordingly, the interior air space dimensions of the actual room will typically be smaller than the product obtained by multiplying the stated length and width. All measurements and dimensions are estimates based on preliminary plans which will vary with actual construction. All floorplans, specifications and other development plans are proposed and conceptual only, and are subject to change and will not necessarily accurately reflect the final plans and specification.

**PENTHOUSE A**  
6 BEDROOMS / 7.5 BATHROOMS

INTERIOR	6,200 SF	576.00 M <sup>2</sup>
TERRACE	4,622 SF	429.38 M <sup>2</sup>
<b>TOTAL *</b>	<b>10,822 SF</b>	<b>1,005.38 M<sup>2</sup></b>

Privé offers 160 graciously appointed residences in two dramatically angled, 16-story buildings. Featuring flow-through layouts with soaring, ten-foot ceilings, each Privé residence offers dramatic views of both the Atlantic Ocean and the Intracoastal Waterway through expansive floor-to-ceiling windows.

Private elevator foyers lead to spacious, well-proportioned spaces ranging from 2,585 to over 9,000 square feet. Exceptional fixtures and finishes include European kitchens and baths, plus elaborate summer kitchens for outdoor entertaining on deep, private terraces.



**ROOFTOP**

BAY VIEW

INTRACOASTAL & OCEAN VIEW

Stated measurements and dimensions of residences are measured to the exterior boundaries of the exterior walls and the centerline of interior demising walls and in fact vary from the dimensions that would be determined by using the description and definition of the "Unit" set forth in the Declaration (which generally only includes the interior airspace between the perimeter walls and excludes all interior structural components and other common elements). This method of measurement used herein is generally used in sales materials and is provided to allow a prospective buyer to compare the Units with units in other projects that utilize the same method. Balconies are not part of the Unit. Measurements of rooms set forth on floorplans are generally taken at the farthest points of each given room (as if the room were a perfect rectangle), without regard for any cutouts or variations. Accordingly, the interior air space dimensions of the actual room will typically be smaller than the product obtained by multiplying the stated length and width. All measurements and dimensions are estimates based on preliminary plans which will vary with actual construction. All floorplans, specifications and other development plans are proposed and conceptual only, and are subject to change and will not necessarily accurately reflect the final plans and specification.

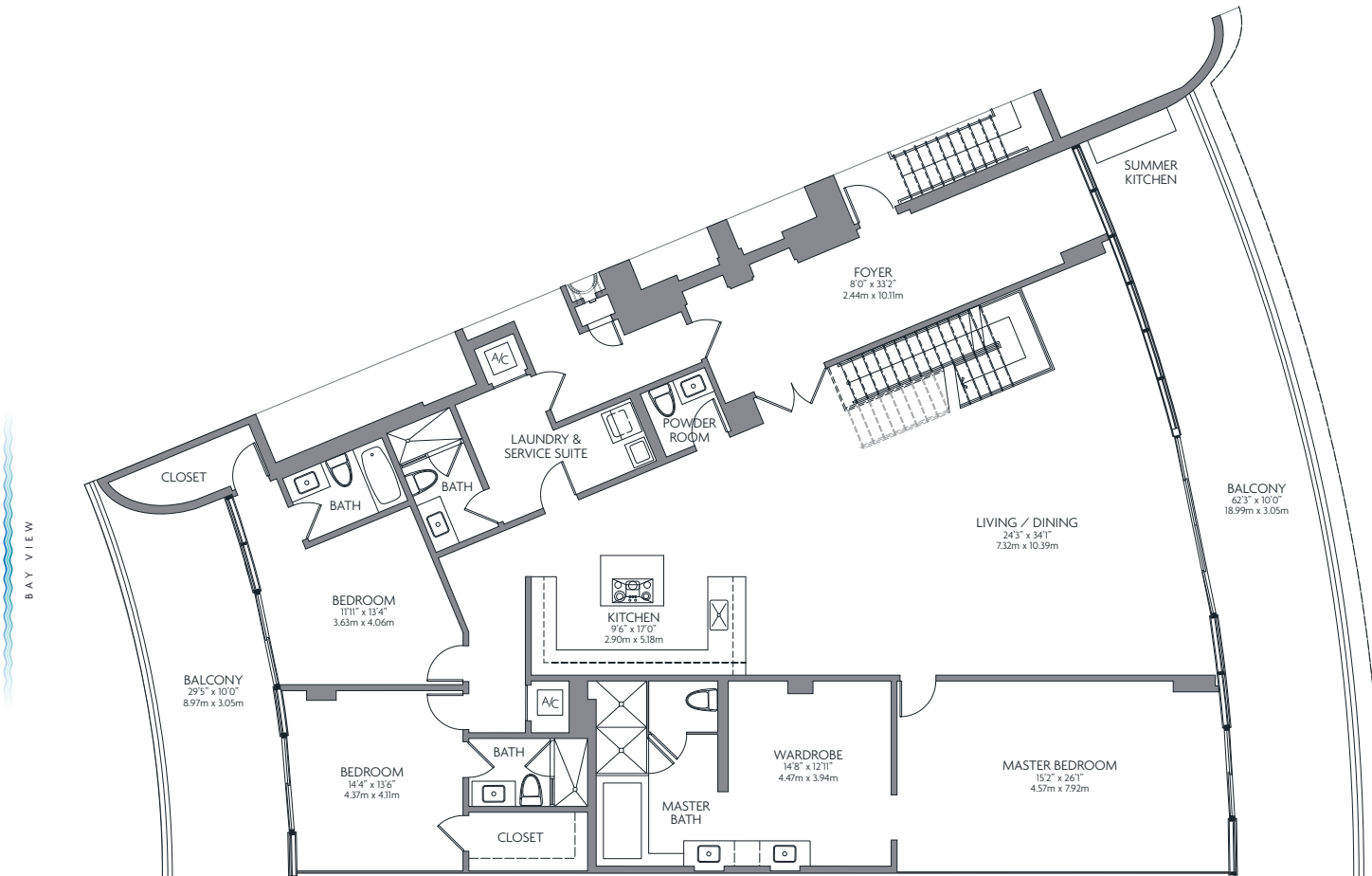


**PENTHOUSE B**  
3 BEDROOMS / 5.5 BATHROOMS

INTERIOR	4,238 SF	393.71 M <sup>2</sup>
TERRACE	2,633 SF	244.61 M <sup>2</sup>
TOTAL *	6,871 SF	638.32 M <sup>2</sup>

Privé offers 160 graciously appointed residences in two dramatically angled, 16-story buildings. Featuring flow-through layouts with soaring, ten-foot ceilings, each Privé residence offers dramatic views of both the Atlantic Ocean and the Intracoastal Waterway through expansive floor-to-ceiling windows.

Private elevator foyers lead to spacious, well-proportioned spaces ranging from 2,585 to over 9,000 square feet. Exceptional fixtures and finishes include European kitchens and baths, plus elaborate summer kitchens for outdoor entertaining on deep, private terraces.



**LOWER FLOOR**

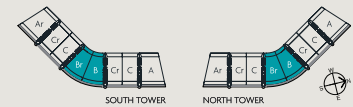
Stated measurements and dimensions of residences are measured to the exterior boundaries of the exterior walls and the centerline of interior demising walls and in fact vary from the dimensions that would be determined by using the description and definition of the "Unit" set forth in the Declaration (which generally only includes the interior airspace between the perimeter walls and excludes all interior structural components and other common elements). This method of measurement used herein is generally used in sales materials and is provided to allow a prospective buyer to compare the Units with units in other projects that utilize the same method. Balconies are not part of the Unit. Measurements of rooms set forth on floorplans are generally taken at the farthest points of each given room (as if the room were a perfect rectangle), without regard for any cutouts or variations. Accordingly, the interior air space dimensions of the actual room will typically be smaller than the product obtained by multiplying the stated length and width. All measurements and dimensions are estimates based on preliminary plans which will vary with actual construction. All floorplans, specifications and other development plans are proposed and conceptual only, and are subject to change and will not necessarily accurately reflect the final plans and specification.

**PENTHOUSE B**  
3 BEDROOMS / 5.5 BATHROOMS

INTERIOR	4,238 SF	393.71 M <sup>2</sup>
TERRACE	2,633 SF	244.61 M <sup>2</sup>
TOTAL *	6,871 SF	638.32 M <sup>2</sup>

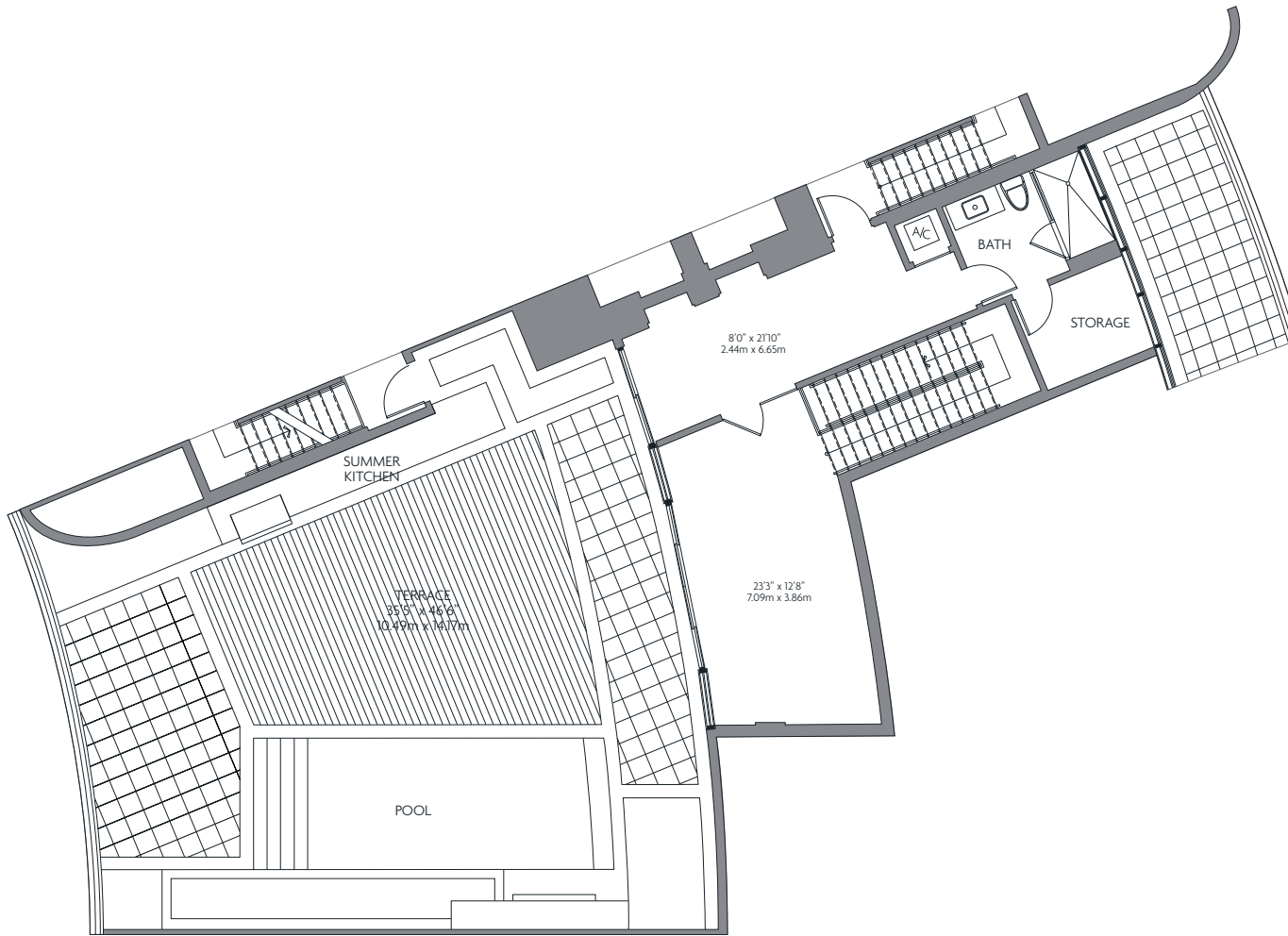
Privé offers 160 graciously appointed residences in two dramatically angled, 16-story buildings. Featuring flow-through layouts with soaring, ten-foot ceilings, each Privé residence offers dramatic views of both the Atlantic Ocean and the Intracoastal Waterway through expansive floor-to-ceiling windows.

Private elevator foyers lead to spacious, well-proportioned spaces ranging from 2,585 to over 9,000 square feet. Exceptional fixtures and finishes include European kitchens and baths, plus elaborate summer kitchens for outdoor entertaining on deep, private terraces.



BAY VIEW

INTRACOASTAL & OCEAN VIEW



**ROOFTOP**

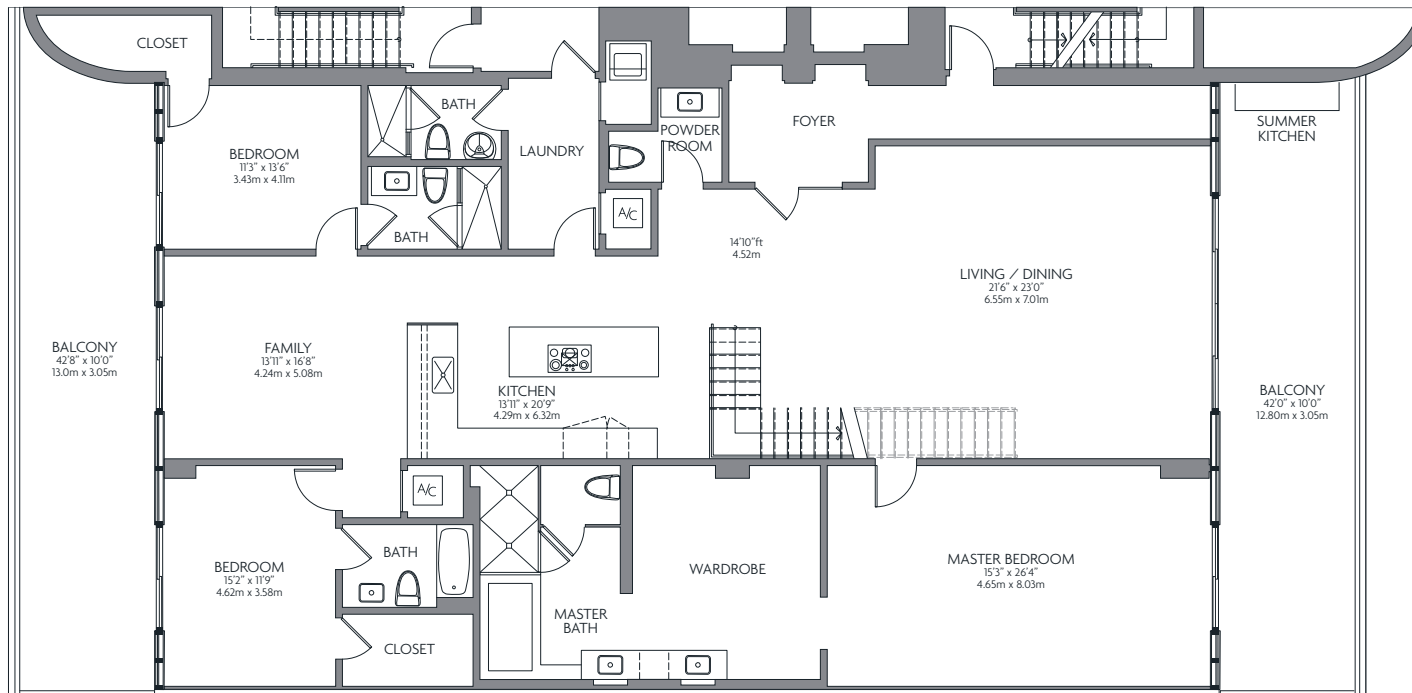
Stated measurements and dimensions of residences are measured to the exterior boundaries of the exterior walls and the centerline of interior demising walls and in fact vary from the dimensions that would be determined by using the description and definition of the "Unit" set forth in the Declaration (which generally only includes the interior airspace between the perimeter walls and excludes all interior structural components and other common elements). This method of measurement used herein is generally used in sales materials and is provided to allow a prospective buyer to compare the Units with units in other projects that utilize the same method. Balconies are not part of the Unit. Measurements of rooms set forth on floorplans are generally taken at the farthest points of each given room (as if the room were a perfect rectangle), without regard for any cutouts or variations. Accordingly, the interior air space dimensions of the actual room will typically be smaller than the product obtained by multiplying the stated length and width. All measurements and dimensions are estimates based on preliminary plans which will vary with actual construction. All floorplans, specifications and other development plans are proposed and conceptual only, and are subject to change and will not necessarily accurately reflect the final plans and specification.

**PENTHOUSE C**  
5 BEDROOMS / 6.5 BATHROOMS

INTERIOR	4,768 SF	442.95 M <sup>2</sup>
TERRACE	3,284 SF	305.08 M <sup>2</sup>
<b>TOTAL *</b>	<b>8,052 SF</b>	<b>748.03 M<sup>2</sup></b>

Privé offers 160 graciously appointed residences in two dramatically angled, 16-story buildings. Featuring flow-through layouts with soaring, ten-foot ceilings, each Privé residence offers dramatic views of both the Atlantic Ocean and the Intracoastal Waterway through expansive floor-to-ceiling windows.

Private elevator foyers lead to spacious, well-proportioned spaces ranging from 2,585 to over 9,000 square feet. ww



BAY VIEW

INTRACOASTAL & OCEAN VIEW

**LOWER FLOOR**

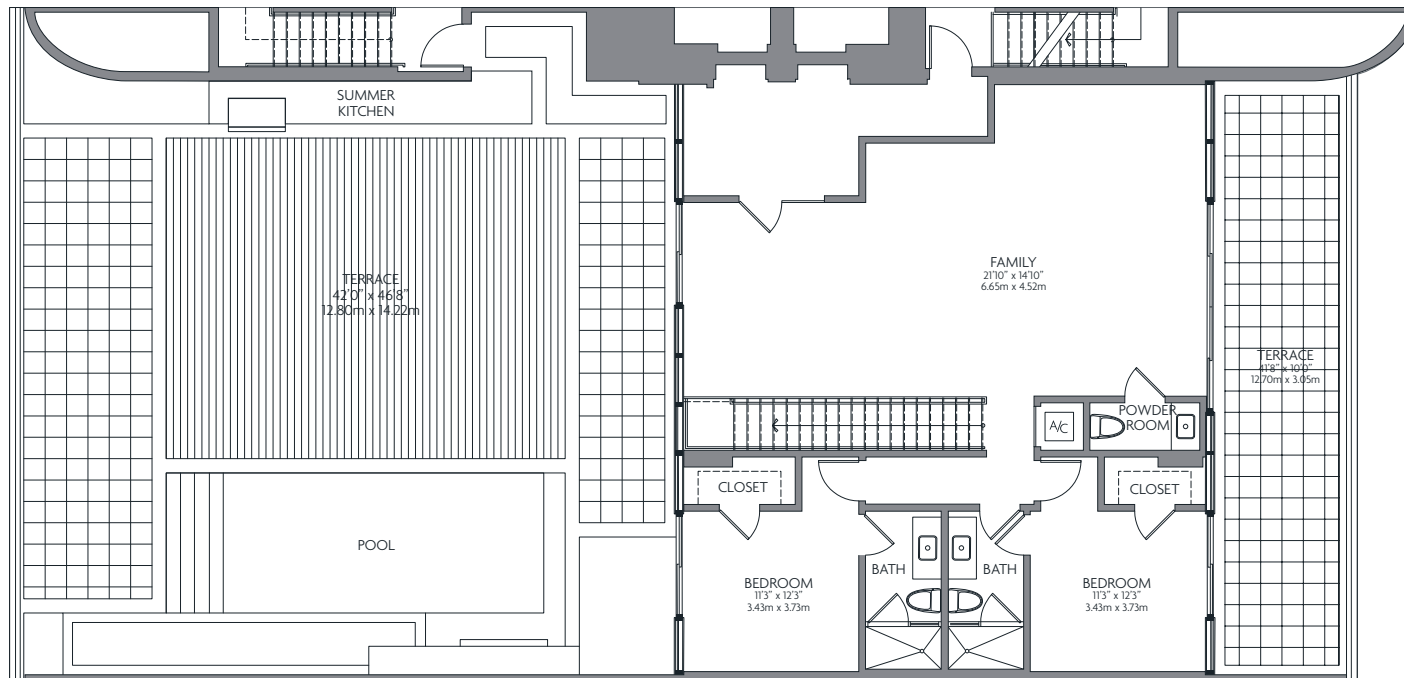
Stated measurements and dimensions of residences are measured to the exterior boundaries of the exterior walls and the centerline of interior demising walls and in fact vary from the dimensions that would be determined by using the description and definition of the "Unit" set forth in the Declaration (which generally only includes the interior airspace between the perimeter walls and excludes all interior structural components and other common elements). This method of measurement used herein is generally used in sales materials and is provided to allow a prospective buyer to compare the Units with units in other projects that utilize the same method. Balconies are not part of the Unit. Measurements of rooms set forth on floorplans are generally taken at the farthest points of each given room (as if the room were a perfect rectangle), without regard for any cutouts or variations. Accordingly, the interior air space dimensions of the actual room will typically be smaller than the product obtained by multiplying the stated length and width. All measurements and dimensions are estimates based on preliminary plans which will vary with actual construction. All floorplans, specifications and other development plans are proposed and conceptual only, and are subject to change and will not necessarily accurately reflect the final plans and specification.

**PENTHOUSE C**  
5 BEDROOMS / 6.5 BATHROOMS

INTERIOR	4,768 SF	442.95 M <sup>2</sup>
TERRACE	3,284 SF	305.08 M <sup>2</sup>
<b>TOTAL *</b>	<b>8,052 SF</b>	<b>748.03 M<sup>2</sup></b>

Privé offers 160 graciously appointed residences in two dramatically angled, 16-story buildings. Featuring flow-through layouts with soaring, ten-foot ceilings, each Privé residence offers dramatic views of both the Atlantic Ocean and the Intracoastal Waterway through expansive floor-to-ceiling windows.

Private elevator foyers lead to spacious, well-proportioned spaces ranging from 2,585 to over 9,000 square feet. Exceptional fixtures and finishes include European kitchens and baths, plus elaborate summer kitchens for outdoor entertaining on deep, private terraces.



**ROOFTOP**

BAY VIEW

INTRACOASTAL & OCEAN VIEW

Stated measurements and dimensions of residences are measured to the exterior boundaries of the exterior walls and the centerline of interior demising walls and in fact vary from the dimensions that would be determined by using the description and definition of the "Unit" set forth in the Declaration (which generally only includes the interior airspace between the perimeter walls and excludes all interior structural components and other common elements). This method of measurement used herein is generally used in sales materials and is provided to allow a prospective buyer to compare the Units with units in other projects that utilize the same method. Balconies are not part of the Unit. Measurements of rooms set forth on floorplans are generally taken at the farthest points of each given room (as if the room were a perfect rectangle), without regard for any cutouts or variations. Accordingly, the interior air space dimensions of the actual room will typically be smaller than the product obtained by multiplying the stated length and width. All measurements and dimensions are estimates based on preliminary plans which will vary with actual construction. All floorplans, specifications and other development plans are proposed and conceptual only, and are subject to change and will not necessarily accurately reflect the final plans and specification.



**ORAL REPRESENTATIONS CANNOT BE RELIED UPON AS CORRECTLY STATING THE REPRESENTATIONS OF THE DEVELOPER. FOR CORRECT REPRESENTATIONS, MAKE REFERENCE TO THIS BROCHURE AND TO THE DOCUMENTS REQUIRED BY SECTION 718.503, FLORIDA STATUTES, TO BE FURNISHED BY A DEVELOPER TO A BUYER OR LESSEE.**

**OBTAIN THE PROPERTY REPORT REQUIRED BY FEDERAL LAW AND READ IT BEFORE SIGNING ANYTHING. NO FEDERAL AGENCY HAS JUDGED THE MERITS OR VALUE, IF ANY, OF THIS PROPERTY.**

These materials are not intended to be an offer to sell, or solicitation to buy a unit in the condominium. Such an offering shall only be made pursuant to the prospectus (offering circular) for the condominium and no statements should be relied upon unless made in the prospectus or in the applicable purchase agreement. In no event shall any solicitation, offer or sale of a unit in the condominium be made in, or to residents of, any state or country in which such activity would be unlawful. No real estate broker or salesperson is authorized to make any representations or other statements regarding this project, and no agreements with, deposits paid to or other arrangements made with any real estate broker are or shall be binding on the developer. All artist's or architectural renderings, plans, sketches, graphic materials, prices, specifications, terms, conditions, statements, features, dimensions, amenities, existing or future views and photos depicted or otherwise described herein are proposed and conceptual only, and are based upon preliminary development plans, which are subject to revisions and other changes, without notice, in the manner provided in the purchase agreement and the offering circular and may not be relied upon. All features listed for the residences are representative only, and the Developer reserves the right, without notice to or approval by the Buyer, to make changes or substitutions of equal or better quality for any features, materials and equipment which are included with the unit. Furnishings and finishes are only included if and to the extent provided in your purchase agreement. The dimensions of units stated or shown in brochures will vary from the dimensions that would be determined based upon the description of the Unit boundaries set forth in the Declaration of Condominium. For the dimensions of the "unit" based on the depiction of "unit" in the Declaration of Condominium, refer to Exhibit 2 of the Declaration of Condominium included in the Prospectus Documents. No guarantees or representations whatsoever are made that existing or future views of the project and surrounding areas depicted by artist's conceptual renderings or otherwise described herein, will be provided or, if provided, will be as depicted or described herein. Any view from any unit or from other portions of the property may in the future be limited or eliminated by future development or forces of nature. Certain access to and rights to use recreational and other amenities within the development may be provided to the South Island, as described in the offering circular. We are pledged to the letter and spirit of U.S. policy for the achievement of equal housing throughout the Nation. We encourage and support an affirmative advertising and marketing program in which there are no barriers to obtaining housing because of race, color, sex, religion, handicap, familial status or national origin.